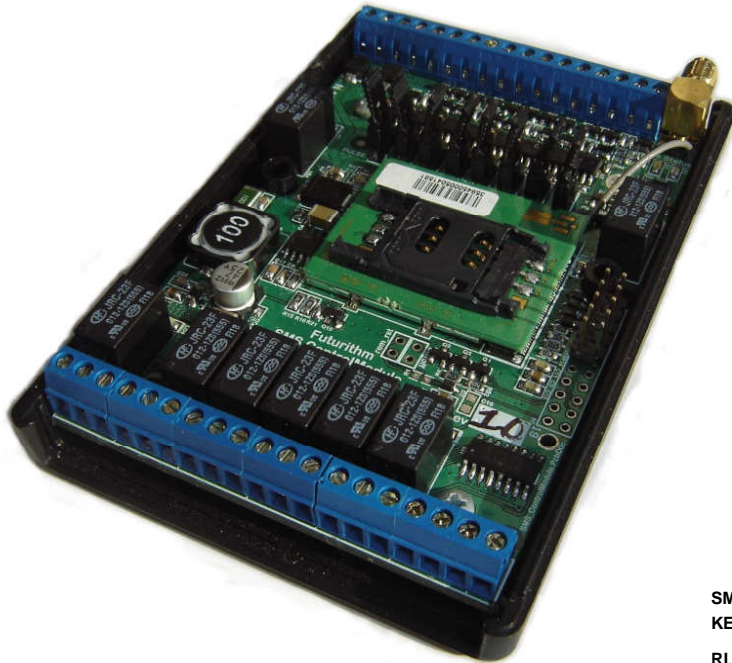
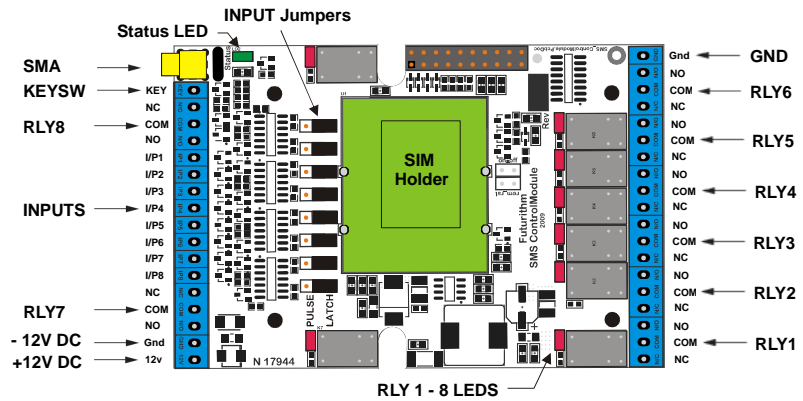


by **Futurithm & Emtec Engineering**



Features

- 8 x Inputs - with ESD Protection
- 8 x Relay Outputs with NO, NC and COM contacts
- Status LED – indicates when online with GSM Network
- Key-Switch – For Arm/Disarm via Alarm Panel
- Fully Programmable via SMS, no PC or special software required
- On-board trigger selectivity: Negative Latch or Negative Pulse
 - Up to 4 Mobile Numbers for receiving SMS's
 - 4 Digit PIN Number for secure programming access
 - Input & Output Aliases eg. Bedroom 1, Garage Door
 - Reverse Polarity Protection across power terminals



SMS Control Module

The SMS Control Module is a general purpose Input / Output Module designed to operate any electronic (low power) device remotely via SMS.

The SMS Control Module has 8 Inputs that can be directly connected to PIR sensors, REED and tamper switches or Open Collector Outputs from Alarm Panels and Access Control Systems.

8 On-board jumpers allows selection between negative latch or negative pulse triggers for the inputs.

Combined with 8 Relay Outputs that can be activated individually or all at once using a simple on / off command. The relay outputs can be used to activate LEDs, Indoor or Outdoor lighting (using high voltage relay module), power other electronic equipment or Arm & Disarm Security Systems.

The SMS Control Module is also ideal for arming multi-area security Systems with up to 8 areas, using the relay outputs each area can be armed Or disarmed via SMS.

Remote Garage Openers can also be activated simply by wiring one of the Output relays directly to the external input of the Garage Door Controller

Supplied in a GP ABS Enclosure, with VHB double-sided for strength and no fuss mounting. Antenna supplied with kit.

Specifications

Operating voltage	12VDC Nominal, Range 10.5 -18VDC
Operating current	500mA MAX (includes Tx & all relays)
Transmitting current.....	350mA
Standby current	75mA
Temperature	-10c - +55c
Frequency	Quad Band (850/900/1800/1900MHz)
Sensitivity	> -106dB
Relays8 x 1 Form C (SPDT)
Contact dry rating	1A at 30V
RF Termination	SMA
Enclosure Type	GP (UL94-HB) ABS Plastic
Terminal Spacing	3.5mm
Dimensions	111mm x 75mm x 25mm
Weight	100g